

# GM Test



FungiXpert<sup>®</sup>

## Aspergillus Galactomannan ELISA Detection Kit

Product code: FGM096-001

**Obtain result in 2h**

## Overview

The incidence of Invasive Aspergillosis (IA) in immunosuppressed patients is rapidly increasing due to antibiotic abuse. *Aspergillus fumigatus* is one of the most common pathogens that cause severe aspergillus infection in patients with immunosuppressive disease, followed by *Aspergillus flavus*, *Aspergillus niger* and *Aspergillus terreus*. Due to lack of typical clinical manifestations and effective early diagnosis methods, IA has a high mortality rate of 60% to 100%. FungiXpert® Aspergillus Galactomannan ELISA Detection Kit is used to detect galactomannan for the early diagnosis of invasive aspergillus infection.

## Product Characteristics

Basic Parameters	Aspergillus Galactomannan ELISA Detection Kit
Method	ELISA
Sample Type	Serum, BAL fluid
Sample Volume	300 µL
Specification	96 tests/kit
Detection Time	2 h
Detection Objects	<i>Aspergillus spp.</i>
Stability	The kit is stable for 1 years at 2°C-8°C
Limit of Detection	0.5 ng/ml

**Validated on  
Fully automatic  
DYNEX DS2**



## Product Advantages

### More Advance

International leading edge detection method, high sensitivity and specificity

### More Accurate

Optimize the operation step, reduce the risk of contamination during the experiment

### Faster

One-step detection, reducing the number of incubation and washing

Obtain results within 2 hours

### More Economical

Split microplate, cost saving

## Clinical Performance

- **Low detection limit**

Limit of Detection (LoD) is 0.5 ng/ml

- **Sensitivity and specificity**

	Serum	BAL
Sensitivity	89.8%	92.4%
Specificity	90.7%	94.1%

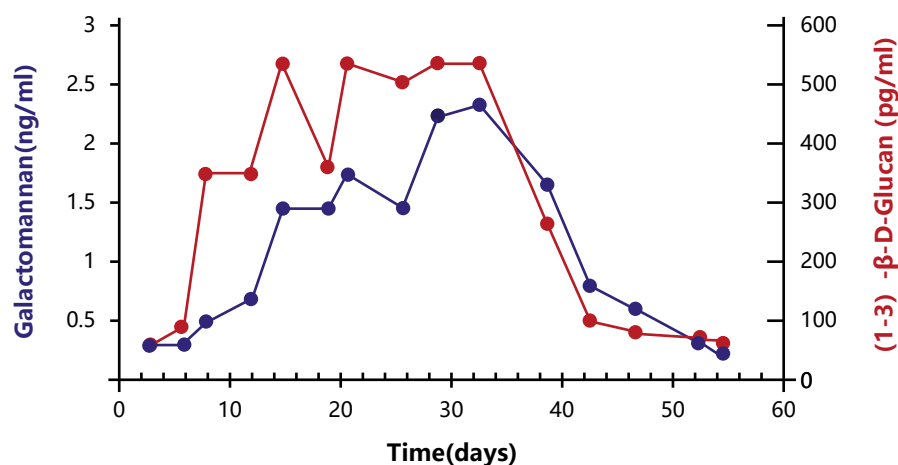
- **Support the diagnosis of invasive aspergillosis in early stage (Pazos et al., 2005)**

*GM* is 5-8 days earlier than the clinical symptoms of invasive aspergillosis (IA);

*GM* is 7.2 days earlier than high-resolution CT scans;

*GM* is on average 12.5 days earlier than starting empirical antifungal treatment.

- **Monitor disease progression and therapeutic response, and predict outcome (Pazos et al., 2005)**



- **Recommendations**

Recommended by IDSA guideline for Aspergillosis 2016 (Patterson et al., 2016) and ESCMID-ECMM-ERS guideline for Aspergillosis 2018 (Ullmann et al., 2017)



*Innovation for Better Health*

For more information contact :

**bio-state Inc.**

16, G. F, Arjun Arcade Phase - 1, Shopping Complex, Sector 30 & 33 Faridabad - 121003, Haryana (Delhi/NCR)  
Mob. : +91 9654454435, 9654454425 Email. : nitin.gupta@bio-state.com Website. : www.bio-state.com